

G-DRIVE T

Screw Compressor

NEW!

**Two-stage compression.
Maximize efficiency.**

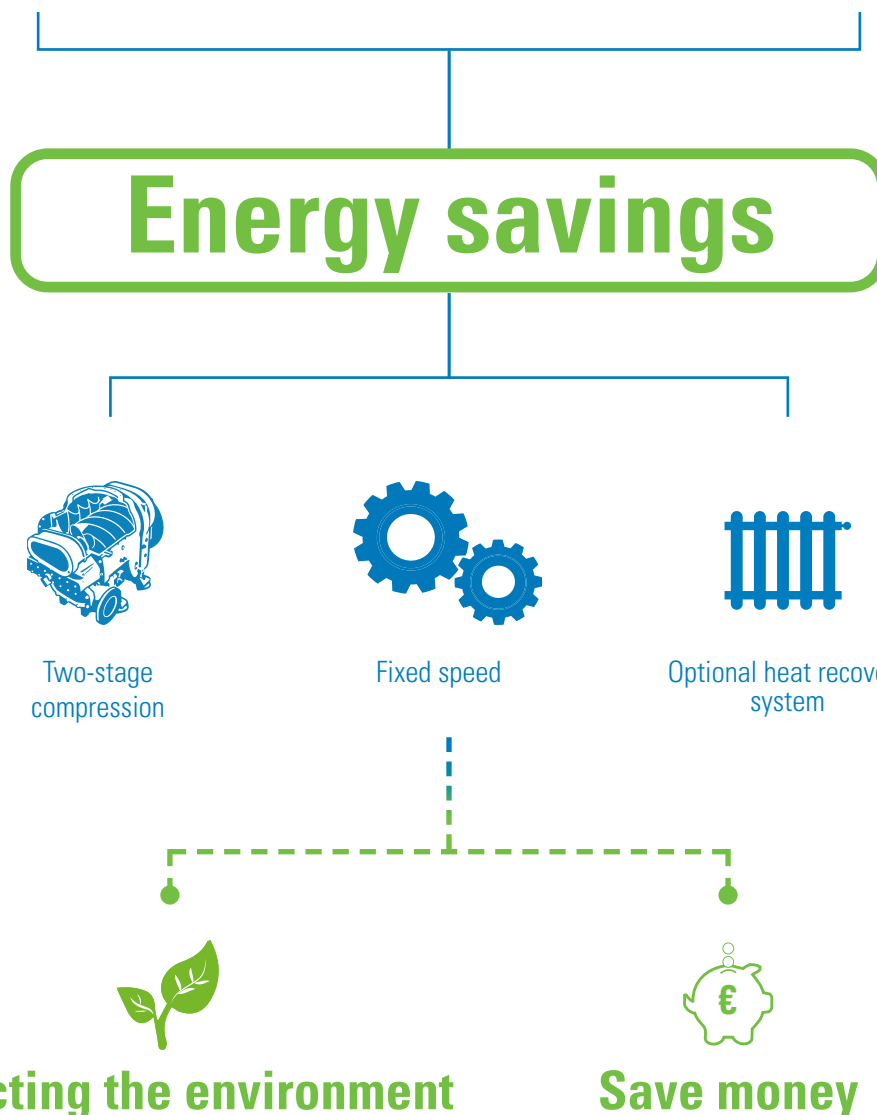
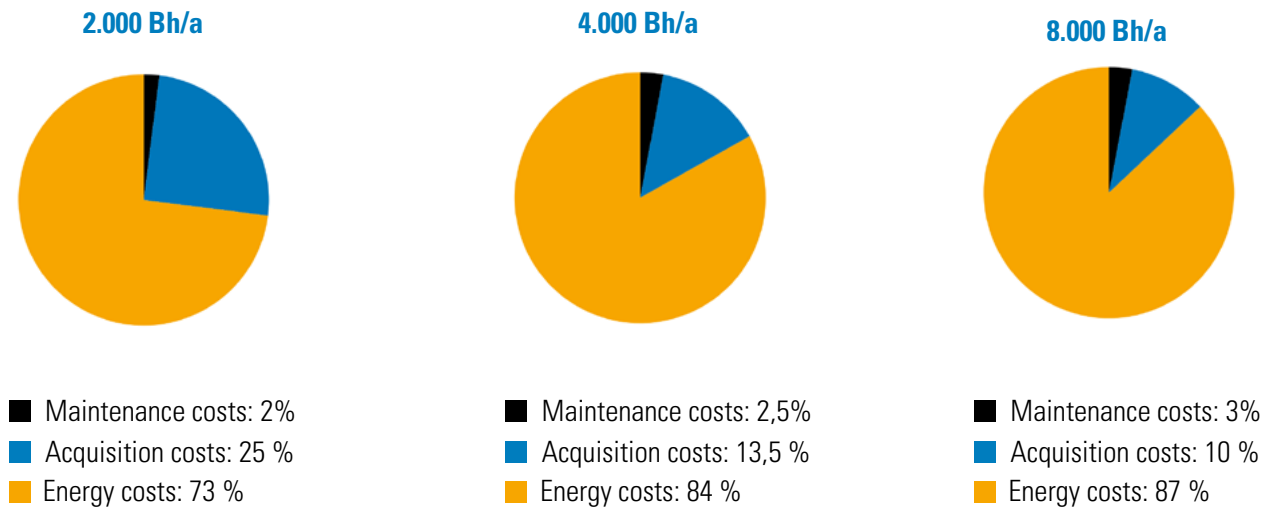


THE NEW GENERATION G-DRIVE T

- ✓ **EFFICIENT SCREW COMPRESSOR TECHNOLOGY**
Two-stage compression for maximum energy savings and reliable compressed air production.
- ✓ **DURABILITY**
Low rotational speeds and minimal pressure differentials increase service life and operational reliability.
- ✓ **MAXIMUM LIFECYCLE COST SAVINGS**
High efficiency and maintenance-friendly design reduce overall operating costs.
- ✓ **INDUSTRY 4:0**
Digital control, IoT device, and COMPASS enable full transparency and remote access.



WHY ENERGY EFFICIENT?



Since energy costs account for the largest share of lifecycle costs, ALMiG continuously optimizes its compressors. The G-Drive T impresses with two-stage compression, a variable speed drive, and outstanding efficiency. With heat recovery, additional heating energy can be saved.

G-DRIVE T

EFFICIENCY REDEFINED

The G-DRIVE T is the economical alternative to the V-DRIVE T - equipped with a powerful drive motor, fixed-speed operation, and integrated two-stage compression. Thanks to the direct drive without a coupling, compact design, and proven ALMiG technology, it offers top efficiency, robustness, and service-friendliness for a wide range of industrial applications.

Drive & Compression

- A single, robust drive motor for both compressor stages
- No coupling, no wear parts between motor and compressor
- Two-stage integrated compression in one compressor unit
- Fixed speed operation without frequency inverter
- Low internal pressure losses thanks to compact stage design
- Reliable direct drive with high efficiency
- Power range: 90 – 250 kW
- Motor: IE4 efficiency class, IP55 protection, insulation class F

Energy Efficiency & Cost-Effectiveness

- Highly efficient two-stage compression reduces energy consumption
- Significantly lower energy demand compared to single-stage machines
- Cost-effective due to lower acquisition costs and simplified technology
- Especially suitable for applications with constant compressed air demand
- Durable and resilient thanks to a reduced mechanical design
- **Volume flow (according to ISO 1217 Annex C-2009):** 42,00 m³/min
- **Operating pressure:** 5 – 13 bar

Digitalization & Connectivity

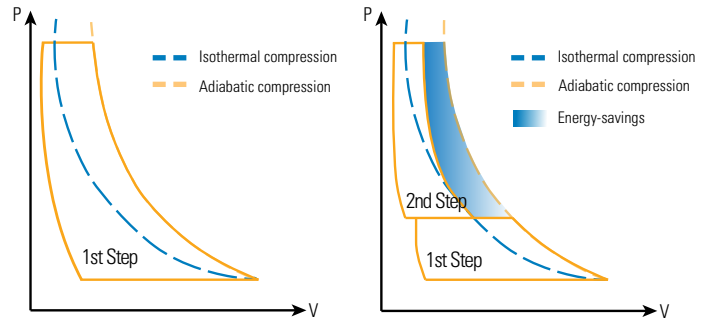
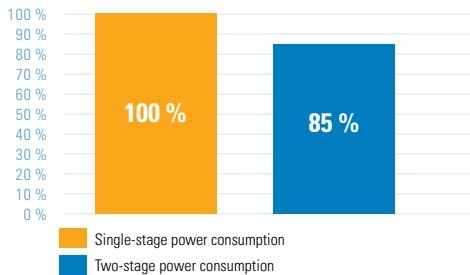
- Modern control system with digital monitoring
- Basic system control functions integrated
- Optionally expandable with IoT device and COMPASS
- Retrofit available on request for remote monitoring and Industry 4.0 integration
- IoT device and COMPASS included free of charge for 5 years

Application & Maintenance

- Ideal for industrial applications with constant air demand
- Reduced maintenance effort thanks to simple mechanics without coupling
- High serviceability due to easy access to all components
- Durable design for continuous operation under industrial conditions
- **Application:** Industrial
- **Cooling:** Air-cooled or optionally water-cooled

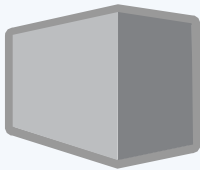
G-DRIVE T

EFFICIENCY THAT PAYS OFF



Single-stage compressor

Standard technology



Volume flow rate @8,0 bar	33,00 m³/min
Motor rated power	200 kW
Input Power	228,59 kW
P spec.	6,93 kW (m³/min)
Air demand / Year*	15.840.000,00 m³
„Load“ Hours / kWh	8.000h
Energy costs / kWh	0,30 €/kWh
„Load“ Costs / Year	548.616,00 €



G-Drive T 48

ALMiG Innovation



Volume flow rate @8,0 bar	42,00 m³/min
Motor rated power	200 kW
Input power	233,57 kW
P spec.	5,56 kW/(m³/min)
Air demand / Year*	15.840.000,00 m³
„Load“ Hours / kWh	6.286 h
Energy costs / kWh	0,30 €/kWh
„Load“ Costs / Year	440.169,71 €
„Load“ Cost savings / Year	108.169,71 €
„Load“ Cost savings / Day	300 €

**Two-stage
compression**



High-efficiency IE4 motor
Low service and maintenance costs
Optional heat recovery system



300 €
cost savings
per day

*8,000 operating hours per year, based on the compressor with the lower delivery volume.

G-DRIVE T

PERFORMANCE FROM INSIDE

Oil cooler

Ensures optimal operating temperature of the lubricant and supports long service life

Efficient IE4 Motor

High efficiency and long bearing life

Oil-lubricated two-stage compression

Maximum efficiency, integrated gearbox, and a robust, long-lasting design

Airfilter

Sturdy base frame

Torsion-resistant with vibration decoupling

AirControl Advanced

Intelligent control system that monitors, visualizes, and documents



G-DRIVE T

PRODUCT VARIATIONS

50 Hz - air cooled

G-DRIVE T	Volume flow rate according to ISO 1217 (Annex C-2009)			Motor rated power	Length	Width	Height	Weight
	8 bar	10 bar	13 bar					
Modell	m ³ /min	m ³ /min	m ³ /min	kW	mm	mm	mm	kg
20	18,60	15,70	13,70	90	2400	1800	2000	3700
24	22,30	19,30	16,70	110	2400	1800	2000	3800
30	27,10	23,40	20,40	132	2800	2000	2000	4300
38	33,60	29,60	25,87	160	2800	2000	2000	4500
48	42,00	37,80	32,84	200	3200	2100	2100	6800
60	53,00	47,00	41,79	250	3200	2100	2100	7000

50 Hz - water cooled

G-DRIVE T	Volume flow rate according to ISO 1217 (Annex C-2009)			Motor rated power	Length	Width	Height	Weight
	8 bar	10 bar	13 bar					
Modell	m ³ /min	m ³ /min	m ³ /min	kW	mm	mm	mm	kg
20	18,60	15,70	13,73	90	2400	1800	2000	3600
24	22,30	19,30	15,42	110	2400	1800	2000	3700
30	27,77	23,99	20,40	132	2800	2000	2000	4100
38	33,60	29,60	25,24	160	2800	2000	2000	4300
48	43,49	37,80	30,74	200	3200	2100	2100	6400
60	53,00	49,94	43,91	250	3200	2100	2100	6600



G-DRIVE T

QUALITY AND INNOVATION MADE **IN GERMANY.**



Decades of experience

ALMiG is a leading provider in compressed air technology with decades of experience. Companies worldwide rely on our customer-focused solutions, quality, innovation, and flexibility. Our compressor technologies deliver excellent performance, high energy efficiency, and conserve resources.



Continuous development

Continuous research and development form the foundation of ALMiG's efficient systems. With our industry expertise, we offer tailored solutions for all company sizes—from craft businesses to large-scale industries.



Comprehensive service

ALMiG offers comprehensive services—from consulting and maintenance to optimizing energy efficiency. As a reliable partner, we support the success of our customers.



Environmental awareness

ALMiG focuses on efficiency and sustainability. We continuously develop energy-saving and environmentally friendly compressors with improved performance. Our oil-free compressors and compressed air treatment components are constantly optimized to minimize environmental impact.

ALMiG AiRCARE WARRANTY

Extend the warranty of your compressed air system for up to 10 years – giving you complete peace of mind.

The ALMiG AiRCARE package gives you the opportunity to claim defect remediation even after the statutory warranty period has expired. Keep full control over your service costs and avoid unpleasant surprises.

What makes ALMiG AiRCARE special is that this extension not only covers the newly purchased ALMiG compressor(s), but also includes related components such as:

- External heat recovery modules
- Refrigeration dryers
- Adsorption dryers
- Oil-water separation systems
- Condensate drains

With a clearly defined budget, you can perfectly combine our maintenance packages with the AiRCARE warranty extension to accurately map out the lifecycle costs of your compressed air system in advance.

The AiRCARE warranty also includes:

- Immediate repairs
- Required spare parts delivery
- Labor time for diagnostics and compressor repairs
- Travel costs within a maximum distance of 100 km and a one-way travel time of up to 2 hours are included in the AirCare package

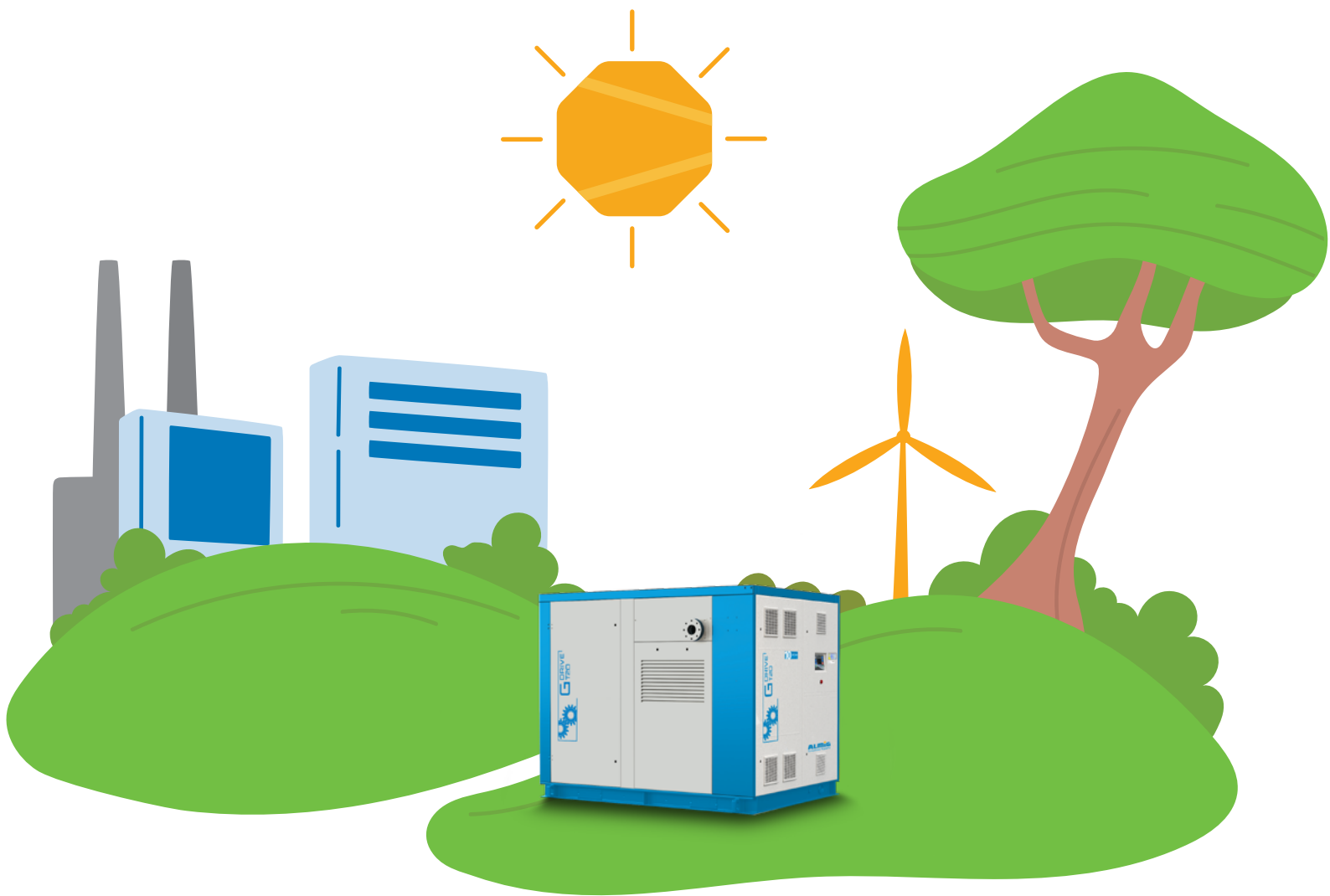
Secure our AiRCARE warranty extension right at the time of purchase or within the first three months – and don't miss out on this unique opportunity to benefit from our comprehensive warranty package.

Don't hesitate to ask your ALMiG specialist about the exact terms and conditions.

Join the many who trust in the AiRCARE package – for up to ten years of protection.

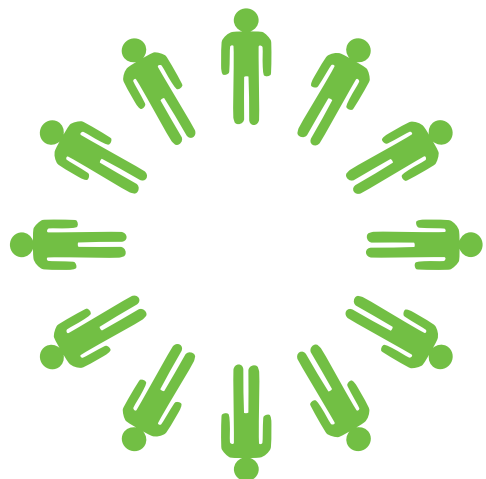


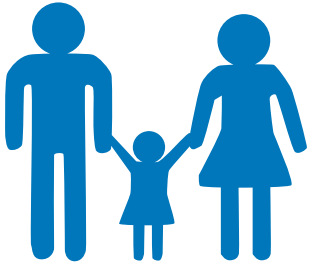
SUSTAINABILITY IN COMPRESSED AIR TECHNOLOGY



Social commitment

As a leading manufacturer of compressed air systems, we combine economic success with environmental responsibility. With innovative technologies and sustainable initiatives, the company sets new standards in the industry while consistently pursuing its environmental goals and strengthening its position as an innovation leader.



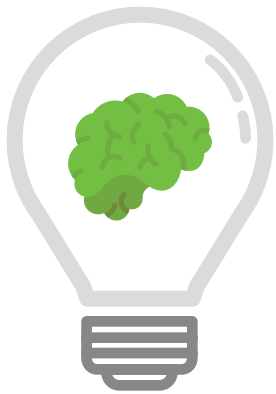


Social responsibility

We support our employees with training and health initiatives and place great importance on work-life balance as well as a positive work environment.

Future through Innovation

Innovation drives ALMiG's sustainable future. Through continuous investment in R&D, we develop energy-efficient, environmentally friendly technologies.



Efficiency and Environmental Awareness

Our products combine top performance with energy efficiency. Through innovative compressed air solutions, frequency-controlled compressors, and intelligent control systems, we minimize the energy consumption and CO2 emissions of our customers.

ISO 14001:2015 Certification

Our certification according to DIN EN ISO 14001:2015 confirms our commitment to environmental management and sustainability. It ensures that we systematically pursue and continuously improve our environmental goals.

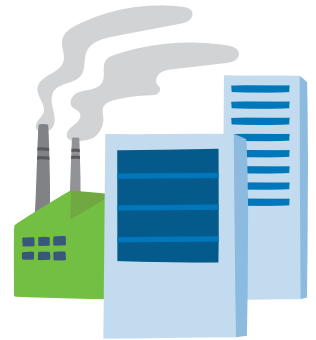


Water Resources Management

Water is one of our most valuable resources. At ALMiG, we place great importance on minimizing water consumption in our production processes.

Sustainability in Production

We rely on sustainable production processes and reduce the consumption of water and energy. Our manufacturing is continuously optimized to minimize waste and emissions.



People and Society in Focus

ALMiG is committed to fair working conditions, employee health, and social projects in the region to jointly promote sustainable change.

Sustainable Partnerships

ALMiG collaborates with partners to promote sustainable solutions and take ecological responsibility along the entire value chain.



Would you like to learn more about us?

**Then visit our website at
www.almig.de
or simply scan this QR code.**



ALMiG Kompressoren GmbH
Adolf-Ehmann-Straße 2
73257 Köngen
Tel: +49 (0)7024 9614-0
info@almig.de
www.almig.com

Errors and changes excepted.
Eligibility for BAFA funding is subject to the conditions set by BAFA.