

GEAR XP SCREW COMPRESSOR







QUALITY AND INNOVATIONS MADE IN GERMANY.

Decades of experience and excellent performance

ALMiG is one of the leading compressed air technology system providers and has decades of experience delivering premium products in the compressed air sector. Companies all around the world trust in our customer focused solutions, our quality, innovation and flexibility. Our advanced compressor technologies combine excellence with the quietest possible running performance, optimal energy efficiency and particularly careful conservation of resources.

Ongoing development and comprehensive industry knowledge

Constant research and development form the essential foundation for the efficiency of every system manufactured by ALMiG. Only these constant enhancements and improvements enable us to react quickly and flexibly to individual customer wishes. This attitude is complemented by a comprehensive understanding of the sector: we understand the challenges that our customers are faced with and the requirements that arise as a consequence. ALMiG offers effective solutions for a wide range of applications – from small craft workshops to medium-sized companies to big industry.

Complete service and maximum availability

The highest quality technological solutions deserve an equally high level of service. The ALMiG service provisions offer our customers a complete service programme: from providing comprehensive advice to ensuring availability, improving cost-effectiveness and developing energy-saving potential. As an expert partner, ALMiG offers its customers advice and support on all issues. Our goal is to contribute to your economic success with our service offerings.

ALMiG: Compressor Systems Made in Germany

Piston compressors

Screw compressors

Turbo compressors

Scroll compressors

Special installations

Controllers

Compressed air treatment

Services

GEAR XP

High compressor performance and operational reliability

The GEAR XP range of screw compressors has been designed to deliver maximum reliability with low operating and service costs. They are especially suitable for constantly high compressed air requirements. The product range offers delivery quantities of 2.62 - 33.00 m³/min at maximum operating pressures of 5 - 13 bar.

The sophisticated system design and the careful selection of components optimize the flow rate. This improves energy efficiency, increases reliability and extends the life of the motor, electrical components, bearings, hoses and seals by up to 50%.

The new GEAR XP series is characterized by an encapsulated gearbox and the motor speed perfectly matching to the compressor stage.

In conjunction with comparatively low rotational speeds and excellent noise insulation, they achieve a very low noise level. Thus, the system can also be installed where the noise level is critical.

The maintenance and service-friendly system concept of the GEAR XP compressors includes a robust drive motor with strong power reserves, generously dimensioned heat exchangers and an intelligent cooling air duct.

All components have been designed with energy efficiency in mind. Starting with the engine, through the compressor stage to the almost lossless gearbox, each component has been optimized. You benefit as a customer and operator of the system over the entire product life cycle.

Application

Industry

Power output

22 - 200 kW

Volume flow acc. to ISO 1217
(Annex C-2009)

8 bar: 3.70 - 33.00 m³/min

10 bar: 3.20 - 30.20 m³/min

13 bar: 2.62 - 25.05 m³/min

Operating pressure

5 - 13 bar

Cooling

Air-cooled (standard)

Water-cooled (option)

Drive

Gearbox

Motor

GEAR XP 22-55 IE 3;

as from GEAR XP 75 IE4;

IP 55 protection, protection class F



- + Ideal for constantly high compressed air requirements under harsh conditions
- + Robust drive unit with strong power reserves
- + Maintenance and service-friendly drive concept

ALMiG XP Series:

The standard compressors for demanding applications:

- Xtra Performance
- Efficient cooling
- Proven reliability
- Robust and long-lasting components



Cooler Unit

Large-area radiators for lowest compressed air outlet temperatures

High performance suction filter

Air Control

Smart controller that monitors, visualises and documents



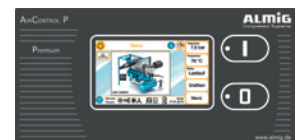
Compressor stage

Latest airend technology with integrated gear set

High-efficient IE4-Motor

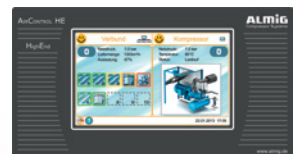
Suitable controllers:

AIR CONTROL P



Standard

AIR CONTROL HE



Optional

GEAR XP



GEAR XP 22



GEAR XP 30 - 37



GEAR XP 45 - 55

50 Hz

GEAR XP	Volume flow acc. to ISO 1217 (Annex C-2009)			Rated motor power	Length	Width	Height	Weight
	8 bar	10 bar	13 bar					
Model	m ³ /min	m ³ /min	m ³ /min	kW	mm	mm	mm	kg
22	3.70	3.20	2.62	22	1250	880	1515	670
30	5.20	4.50	3.86	30	1350	940	1680	820
37	6.30	5.60	4.70	37	1350	940	1680	860
45	7.70	7.02	5.92	45	2000	1250	1750	1555
55	9.60	8.40	7.19	55	2000	1250	1750	1640
75	12.80	11.80	10.20	75	2180	1330	1850	2025
90	15.30	13.80	11.80	90	2180	1330	1850	2120



GEAR XP 75 - 90



GEAR XP 100 - 200

50 Hz								
GEAR XP	Volume flow acc. to ISO 1217 (Annex C-2009)			Rated motor power	Length	Width	Height	Weight
	8 bar	10 bar	13 bar					
Model	m ³ /min	m ³ /min	m ³ /min	kW	mm	mm	mm	kg
110	20.00	17.00	14.70	110	2940	1710	1825	3000
132	23.20	21.00	17.36	132	2940	1710	1825	3500
160	27.90	24.60	21.00	160	3300	1860	2145	3700
200	33.00	30.20	25.05	200	3300	1860	2145	3750



ALMiG Kompressoren GmbH
Adolf-Ehmann-Straße 2
73257 Köngen, Germany
Tel: +49 (0)7024 9614-0
info@almig.de

www.almig.com



GEAR XP_09/2020